

### SURFACE MOUNTED LED SHOWER ROOM LIGHT

Naval Surface Mounted Shower Room Light with Diamond Structure Diffuser. Conforms to IP44. Available with 20 Watt LED Module.

IP 44

#### Features

Housing & Cover : CRCA fabrication body with Zink Yellow Passivation as per DF STAN 03-20 and RAL 9010 epoxy powder coated surface finish.(can be customized on requirement )  
-CRCA Thk : 1mm

#### Optics

Diamond Structure diffuser.

#### Installation

Surface Mounted

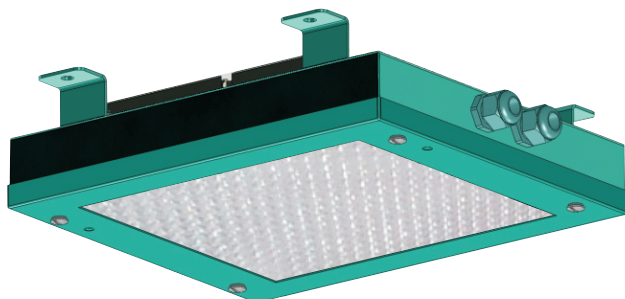
Control gear: Control gear unit consists of constant current Power Supply and mains connector with Loopin Loopout facility.

#### Applications

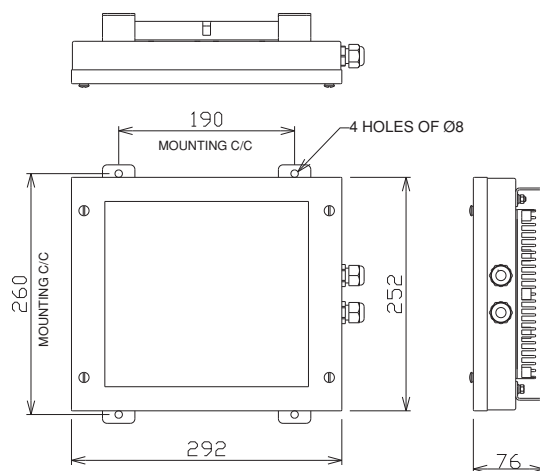
For Shower & Toilet Room Illumination.

Mains Supply Voltage : 110...230 Volt AC Single Phase & 24 Volt DC

#### Product Photo



#### Product Dimensions



#### How To Order This Product

| Catalogue Number | LED Type | Dimensions (mm) |     |    | Electrical Parameters |                     | Accessories      |           |         |             |
|------------------|----------|-----------------|-----|----|-----------------------|---------------------|------------------|-----------|---------|-------------|
|                  |          | A               | B   | C  | Input Voltage         | Mains Current (Amp) | Power Supply     | Capacitor | Starter | Lamp Holder |
| MME-COM-33       | 20W LED  | 292             | 252 | 76 | 110...230 V AC        | 0.350               | 20W, 0.350A, 24V | NA        | NA      | NA          |
| MME-COM-33-DC    | 20W LED  | 292             | 252 | 76 | 24 V DC               | 0.350               | 20W, 0.350A, 24V | NA        | NA      | NA          |

